

CASE STUDY

Medical Cannabis Factory

Odense, Denmark

In Denmark, Europe's largest production space of medical cannabis is emerging. In cooperation with our partner JTI Gulventreprise a/s, the greenhouses will be equipped with CONIFLOOR IPS industrial floor.

The project started with an area of **6,000 m²** in an existing greenhouse, more than 100,000 m² are planned to be operational after overall completion. The plants are grown in mobile boxes on wheels or a rail system in order to save space. Soil, tools and harvested plants will be carried in all sorts of trolleys and wagons, too.

A unique challenge is the heat. In summer temperatures in the greenhouses can exceed 60°C. To fulfill these requirements the prime contractor opted for the **CONIFLOOR IPS**, a three-layer, low-emission certified, tough-hard and statically crack-bridging polyurethane floor system for all types of industrial floors. The system is solvent-free, liquid-tight and easy to clean. It is especially suitable for floors of medium resilience and often used in production halls, warehouses and engineering rooms. The system is efficient and easily applicable, provides high quality and safety features, and is distinguished by its high durability





CONIFLOOR IPS

Flow applied industrial polyurethane flooring system.

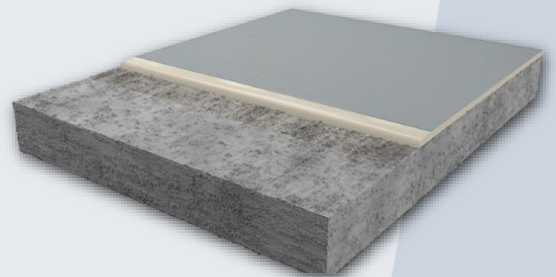
Self smoothing flow applied industrial polyurethane flooring systems are ideal for medium duty areas. IPS is best suited to dry areas, whilst IPS SR is best suited to areas requiring a slip resistant surface. Both systems are flexible with excellent static crack bridging performance

Features:

- Excellent scratch and impact resistance
- Crack bridging properties
- Seamless and impermeable
- High opacity
- Wide range of colours

Areas for use:

- Manufacturing facilities
- Packing halls
- Mezzanine areas
- Plant rooms
- Workshops



CONTACT

CONICA LTD
Jessop Way, Newark
Nottinghamshire NG24 2ER
United Kingdom
Tel +44 (0)1636 642 460
enquiry@conica.com



www.conica.co.uk