

CONIFLOOR IET AS

(Industrial Epoxy Texture Anti-Static)

Hard, electrostatically conductive structure coating based on epoxy resin, thin-layer and economical, for light to medium mechanical loads, for EX protection areas (ATEX) according to requirements EN 1081 and EN 61340-4-1 indoor



- 1 Primer
- 2 Scratch coat optional
- 3 Conductive layer with copper tape
- 4 Conductive structured coating

System design and consumption

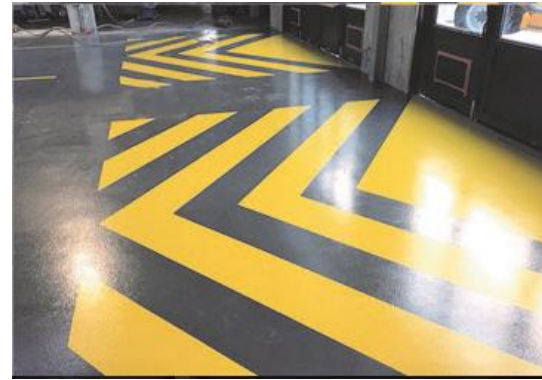
LAYER	PRODUCT	CONSUMPTION (kg/m ²)	QS / FILLER (kg/m ²)	APPLICATION
1 Primer on strongly absorbent u. porous substrates, if necessary, 2-layer application *	CONIFLOOR EP 110 / CONIFLOOR EP 112 or CONIFLOOR EP 116LE	0.3 – 0.5 * 2-layers if necessary or scratch coat	QS 03/08 0.8 – 1.0	Squeegee / roller / brush Sand broadcasting, not in excess
2.1 Scratch coat / levelling (optional)	CONIFLOOR EP 110 / CONIFLOOR EP 112 or CONIFLOOR EP 116LE filled with QS 01/03	0.6 – 1.0 QS 01/03 MR ≤ 1:1	QS 03/08 2.0 – 3.0	Trowel / smoothing rake / notched trowel or squeegee Sand broadcasting, not in excess
2.2 Pore sealer / levelling layer optional / alternative	CONIFLOOR 430 if necessary filled with QS 01/03	0.6 – 1.0 MR ≤ 1:0.5	none	Trowel / smoothing rake / notched trowel or rake
3 Conductive layer with copper tape to earth point	CONIFLOOR EP 150 incl. copper tape for earthing	0.1 – 0.12	none	Earthing copper tape on scratch coat (grinded) below the conductive layer, measure conductive layer before apply next coating!
4 Conductive hard structure coating (orange skin)	CONIFLOOR EP 431 AS	0.6 – 0.8 if necessary to increase slip resistance fill with SIC F24 / F22 / F20	optional 10 Gew.-% SIC	Notched trowel / notched rake / smoothing trowel with QS Re-roll with structure roller (yellow foam middle or coarse) depending on consumption, re- roll in in one direction
System layer thickness	ca. 0.5 – 1.0 mm			
Subsoil	Surfaces must be clean, stable, and free of cracks and voids. In general, substrates must be provided in accordance with the applicable regulations. (See also "General processing guidelines for CONICA coatings, CONICA seals and CONICA parking deck coating systems"). Adhesive tensile strength ≥ 1.5 N / mm ² max. Residual moisture ≤ 4% -CM, on cementitious substrates. Special precautions must be taken in the event of higher residual moisture levels and moisture by rising water. Preparation of the surface e.g. by grinding (diamond) or shot blasting (Blastrac) with subsequent sweeping and vacuuming is mandatory. The above-mentioned consumption values have been determined in the laboratory under practical conditions to achieve the technical properties. In the case of existing on-site conditions and conditions such as temperature, surface roughness etc., the consumption values may deviate from the stated values. In case of doubt, we recommend creating sample areas on site.			
Notes	For other substrates, which are not mentioned here or special requirements, special primers must be used if necessary, please ask our technical service. Detailed processing instructions can be found in the respective product data sheets or are available on request.			

Areas of application

- Production areas with light to medium mechanical load and dry to moderate wet use
- Storage areas with light mechanical load
- Electronically and pharmaceutical production areas with EX-protection (ATEX)
- Technical rooms and corridors
- Wall surfaces in wet production areas

System properties

- **Good** colour resistance (indoor)
- **Wide range of colours** accord. to RAL
- **Conductive** accord. EN 1081 and EN 61340-4-1 **for EX-protection (ATEX)**
- Slip resistant surfaces R9 – R11
- **Trafficable** with forklift and pallet trucks (Vulcollan wheels) and similar
- **For light to moderate mechanical load**
- **Hygienic**, seam less and joint less application
- Fire behaviour class **Bfl-s1**



Technical data (internal / external approvals)

PROPERTIES	STANDARD	VALUES
Shore-Hardness	DIN ISO 868	81 D after 28 d
Chemical resistance	EN ISO 2812-1	DIBt test liquids 10, 11,12 others on request
Impact strength	DIN EN 13813	≤ 4 Nm (IR4)
Abrasion resistance (Taber)	ISO 9352, ASTM D 1044	≤ 65 mg (incl. top coat)
Abrasion resistance (BCA)	DIN EN 13813	AR ≤ 1,0
Slip resistance	DGUV guide line 108-003 / DIN 51130	Class R9 / R10
Adhesive strength	DIN ISO 4624	≥ 1,5 N/mm ² (Depends on substrate)
Fire classification	EN 13501-1	Bfl-s1 (tested in CF IET ESD)
Conductivity	EN 1081	Rg ≤ 10 ⁶ Ω
	EN 61340-4-1	Rg ≤ 10 ⁹ Ω

CONICA AG
 Industriestrasse 26
 8207 Schaffhausen/ Swiss
 Tel. +41 (0)52 644 36 00
 Fax +41 (0)52 644 36 99
info@conica.com
www.conica.com

The content of this information sheet is non-binding. With regard to the variety of surfaces and object conditions on the one hand, and on the other hand due to the fact that the application and processing of this product are beyond our control, the buyer and / or user is not released from the obligation to its own responsibility, to check and ensure, that this product is suitable for the intended use. Our verbal, written advice and tests is non-binding.

With the publication of this issue, all previous information on this system is no longer up to date. Since the data sheets are updated regularly, it is the responsibility of the user to have the current version available. Registered users can download current data sheets from our homepage at any time. We would be happy to send them to you on request.