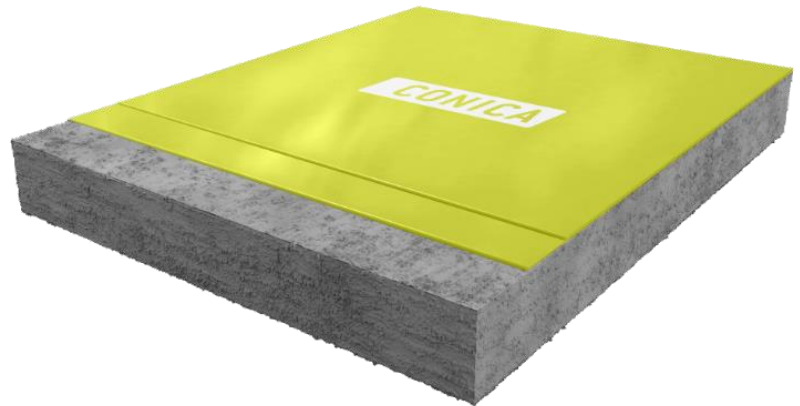


CONIFLOOR IWL

(Industrial Water based Epoxy Light)

Hard, low-emission roller coating on an aqueous epoxy resin basis, thin-layer and economical, water vapour permeable, for light to medium mechanical loads, for indoor use



1 Primer pigmented
2 Roller coat pigmented

System design and consumption

LAYER	PRODUCT	CONSUMPTION (kg/m ²)	QS / FILLER (kg/m ²)	APPLICATION
1 Primer pigmented on strongly absorbent u. porous substrates, if necessary, 2-layer application *	CONIFLOOR EP 500 CW diluted with 5 % water	0.18 – 0.25 * 2-layers if necessary or scratch coat	none	Squeegee / roller / brush
2 Roller coating, pigmented, matt, water based EP, water vapour permeable	CONIFLOOR EP 500 CW	0.18– 0.25 if necessary in 2 layers to increase mechanical resistance	none	Squeegee / roller / re-roll with 2nd roller for finish (11 mm)
System layer thickness	ca. 0.3 – 0.4 mm			
Subsoil	The surfaces must be clean and stable and free of cracks and voids. In general, substrates must be provided in accordance with the applicable regulations. (See also "General processing guidelines for CONICA coatings, CONICA seals and CONICA parking deck coating systems"). Adhesive tensile strength $\geq 1.5 \text{ N/mm}^2$, max. residual moisture $\leq 6 - 8\%$ -CM on cementitious substrates for calcium sulphate screeds max. 1% CM residual moisture allowed, in conjunction with underfloor heating max. 0.3% CM. Special precautionary measures must be taken from the rear in the case of higher residual moisture values and moisture. Preparation of the surface, e.g. grinding (diamond) followed by sweeping and vacuuming is mandatory. The above consumption values are determined in the laboratory under practical conditions in order to achieve the technical properties. In the case of existing on-site conditions and conditions such as temperature, surface roughness, etc., the consumption values may deviate from the specified values. In case of doubt, we recommend creating sample areas on site.			
Notes	For other substrates, which are not mentioned here or special requirements, special primers must be used if necessary, please ask our technical service. Detailed processing instructions can be found in the respective product data sheets or are available on request.			

Areas of application

- Production areas with light to medium mechanical load and dry to moderate wet use
- Storage areas with light mechanical load
- Workshops
- Technical rooms and corridors
- Concrete and cementitious substrates with high residual moisture content or rising water

System properties

- **Good** UV and colour resistance (indoor)
- **Wide range of colours** accord. to RAL
- **Very low emissions** tested according to AgBB and other standards
- Slip resistant surfaces R9 – R10
- **Trafficable** with forklift and pallet trucks (Vulcollan wheels) and similar
- **For light to moderate mechanical load**
- **Hygienic**, seam less and joint less application
- Fire behaviour class **B_{fl}-s1**



Technical data (internal / external approvals)

PROPERTIES	STANDARD	VALUES
Water diffusion resistance	DIN EN ISO 7783	V = 1,5 g/(m ² *d)
Shore-Hardness	DIN ISO 868	78 D after 28 d
Chemical resistance	EN ISO 2812-1	DiBT test liquids 10, 11,12 and others
Impact strength	DIN EN 13813	≤ 4 Nm (IR4)
Abrasion resistance (Taber)	ISO 9352, ASTM D 1044	≤ 50 mg
Abrasion resistance (BCA)	DIN EN 13813	AR ≤ 0.5
Slip resistance	DGUV guide line 108-003 / DIN 51130	Class R9 / R10
Adhesive strength	DIN ISO 4624	≥ 1,5 N/mm ² (Depends on substrate)
Fire classification	EN 13501-1	B _{fl} -s1 (Tested in CF IWM)

CONICA AG
 Industriestrasse 26
 8207 Schaffhausen/ Swiss
 Tel. +41 (0)52 644 36 00
 Fax +41 (0)52 644 36 99
info@conica.com
www.conica.com

The content of this information sheet is non-binding. With regard to the variety of surfaces and object conditions on the one hand, and on the other hand due to the fact that the application and processing of this product are beyond our control, the buyer and / or user is not released from the obligation to its own responsibility, to check and ensure, that this product is suitable for the intended use. Our verbal, written advice and tests is non-binding.

With the publication of this issue, all previous information on this system is no longer up to date. Since the data sheets are updated regularly, it is the responsibility of the user to have the current version available. Registered users can download current data sheets from our homepage at any time. We would be happy to send them to you on request.