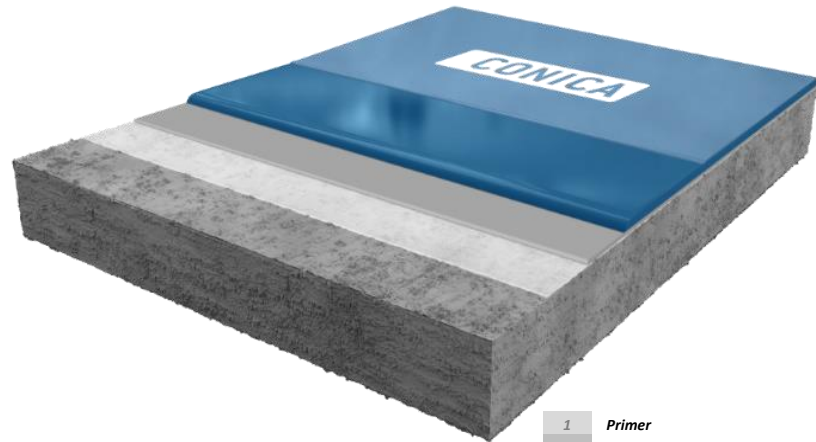


CONIFLOOR UPD

(Urban Polyurethane Decorative)

Decorative, low emission coating system based on aliphatic polyurethane resin, elastic, comfortable to walk, impact and walking sound reducing properties for indoor application



- 1 Primer
- 2.1 Scratch coat optional
- 2.2 Levelling layer recommend
- 4 Decorative design coating
- 5 Topcoat transparent

System design and consumption

LAYER	PRODUCT	CONSUMPTION (kg/m ²)	QS / FILLER (kg/m ²)	APPLICATION	
1	Primer on strongly absorbent u. porous substrates, if necessary, 2-layer application *	CONIFLOOR EP 110 / CONIFLOOR EP 112 CONIFLOOR EP 116LE	0.3 – 0.5 * 2-layers if necessary or scratch coat	QS 03/08 0.8 – 1.0	Squeegee / roller / brush Sand broadcasting, not in excess
2	Scratch coat / levelling (optional)	CONIFLOOR EP 110 / CONIFLOOR EP 112 CONIFLOOR EP 116LE filled with QS 01/03	0.6 – 1.0 QS 01/03 MR ≤ 1:1	QS 03/08 2.0 – 3.0	Trowel / smoothing rake / notched trowel or squeegee Sand broadcasting, not in excess
3	Pore sealer / levelling layer (recommend)	CONIFLOOR 440 / CONIFLOOR 450	0.8 – 1.0	none	Trowel / smoothing rake / notched trowel or rake / design trowel depending on design
4	Decorative self-levelling coating	CONIFLOOR 450	2.5 – 3.0	optional colour flakes (2 mm) or design floor (mixed colours)	Notched spatula or trowel / notched squeegee / trowel depending on required design
5	Top coat transparent, matt	CONIFLOOR 541 W alternative CONIFLOOR 541/1 W	0.11 – 0.13	optional CONIFLOOR Ballotini for slip resistance	Roller (micro fibre) 11 mm
System layer thickness		ca. 2.0 – 3.0 mm			

Subsoil

Surfaces must be clean, stable, and free of cracks and voids. In general, substrates must be provided in accordance with the applicable regulations. (See also "General processing guidelines for CONICA coatings, CONICA seals and CONICA parking deck coating systems"). Adhesive tensile strength ≥ 1.5 N / mm², max. Residual moisture ≤ 4% -CM, on cementitious substrates. Special precautions must be taken in the event of higher residual moisture levels and moisture by rising water. Preparation of the surface e.g. by grinding (diamond) or shot blasting (Blastrac) with subsequent sweeping and vacuuming is mandatory. The above-mentioned consumption values have been determined in the laboratory under practical conditions to achieve the technical properties. In the case of existing on-site conditions and conditions such as temperature, surface roughness etc., the consumption values may deviate from the stated values. In case of doubt, we recommend creating sample areas on site.

Notes

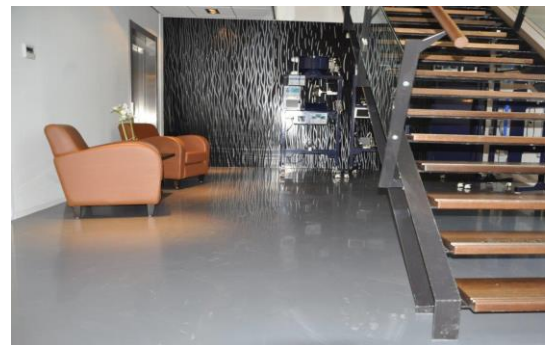
For other substrates, which are not mentioned here or special requirements, special primers must be used if necessary, please ask our technical service. Detailed processing instructions can be found in the respective product data sheets or are available on request.

Areas of application

- Hospitals, medical practices, Nursing homes
- Schools, kindergartens, universities
- Offices and public buildings
- Shops, restaurants, canteens
- Exhibition areas
- Private living areas

System properties

- **Very high** UV and colour resistance
- Wide range of colours and for **individual design applications**
- **Very low emissions** tested according to AgBB, M2, A ++ and other standards
- **Reducing impact and walking noise** (2 - 3 dB)
- R9 - R11 non-slip surfaces
- **Comfortable** to walk and warm to feet
- **Hygienic**, joint and seamless surfaces easy to clean
- Statically **crack bridging**
- Flame retardant class **B_{fl}-s1**



Technical data (internal / external approvals)

PROPERTIES	STANDARD	VALUES
Statically crack bridging	EN 1062-7	Class A3 > 0.5 mm (achieved 0.7 mm at 23°C)
Elongation at break (Coating)	DIN 53504	ca. 60 %
Tear resistance	DIN 53515	ca. 15 N/mm ²
Shore-hardness	DIN ISO 868	87 A after 7 d
Type of use	Following EN 685	Private buildings: 23; public buildings: 34
Impact sound reduction	ISO 10140-1	ca. 2 – 3 dB
Impact strength	EN 13813	≥ 6 Nm (IR6)
Abrasion resistance (Taber)	ISO 9352, ASTM D 1044	≤ 16 mg (incl. top coat)
Abrasion resistance (BCA)	DIN EN 13813	AR ≤ 0.5
Slip resistance	DGUV guide line 108-003 / DIN 51130	Class R9 / R10 / R11
Adhesive strength	DIN ISO 4624	≥ 1,5 N/mm ² (Depends on substrate)
Fire classification	EN 13501-1	B _{fl} -s1
Emission	AgBB / M2 / TÜV Proficert standard	Low emission fulfilled

CONICA AG
 Industriestrasse 26
 8207 Schaffhausen/ Swiss
 Tel. +41 (0)52 644 36 00
 Fax. +41 (0)52 644 36 99
info@conica.com
www.conica.com

The content of this information sheet is non-binding. With regard to the variety of surfaces and object conditions on the one hand, and on the other hand due to the fact that the application and processing of this product are beyond our control, the buyer and / or user is not released from the obligation to its own responsibility, to check and ensure, that this product is suitable for the intended use. Our verbal, written advice and tests is non-binding.

With the publication of this issue, all previous information on this system is no longer up to date. Since the data sheets are updated regularly, it is the responsibility of the user to have the current version available. Registered users can download current data sheets from our homepage at any time. We would be happy to send them to you on request.